



T U R N   O N   T H E   H E A T

HEETA 



Wood fires, the smell of the wood and ambiance of a crackling fire. There are many reasons for enthusiasts to purchase a real wood stove. The warmth of a wood stove is mesmerizing and comfortable. The fire image is so playful that you continue to watch and enjoy the flames. A Heeta wood-burning stove guarantees many years of enjoyment and comfort.

Heeta offers a sophisticated range of:

- **Contemporary Insert Stoves.**
- **Modern Suspended Fires.**
- **Authentic, free-standing wood stoves.**

Let our selected Heeta dealer advise you on the wood stove that best suits your living situation and lifestyle.

All Heeta stoves come with...

- **Ash drawer for easy cleaning.**
- **5mm Steel firebox with Soil Brick lining.**
- **Large Frameless Glass Door.**
- **5 Year Limited Guarantee.**



HEETA<sup>1</sup>

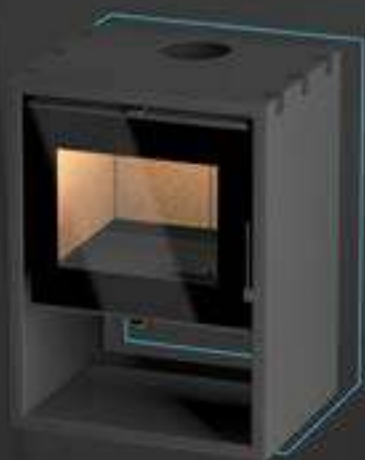
## Levit

- Dimensions: 1100mm diameter
- Flue Size Outlet: 215 diameter
- Heating Capacity: 300m<sup>3</sup>
- Weight: 125 kg
- Output Nominal 8kw - Max 11kw
- Efficiency: 65%
- 5 Year Limited Guarantee

Not just a pretty face, the Levit suspended fireplace can turn on the heat, unlike any other fireplace.

It is both a fireplace and an art object. The Levit suspended fireplace is available as both wood burning or bioethanol fuelled and will rotate 360 degrees.





## 600 Heeta LB

- Dimensions: Width 605mm x Height 785 mm x Depth 480 mm
- Flue Size Outlet: 150mm
- Heating Capacity: 350m<sup>3</sup>
- Weight: 108.5 kg
- Output Nominal 10kw - Max 13kw
- Efficiency: 80%
- 5mm Steel Firebox with Soil Brick lining.
- 5 Year Limited Guarantee

This Fireplace is characterized by a simple and modern design, which is why it fits into any space. The basic model of the fireplace is made of steel with a full glass door.

Log Bases are normally add-on's for fireplaces and we recommend it to anyone who likes the simpler structure and clean lines.

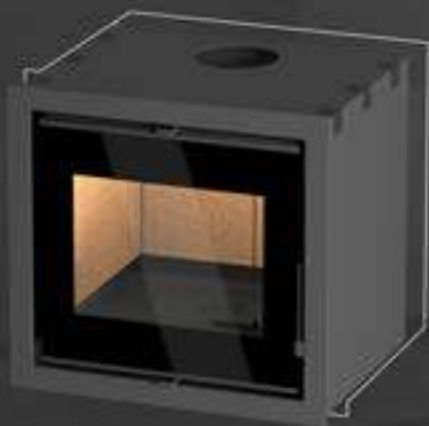
Like every model of the Heeta Range, The 600LB has brilliant airflow management, ensuring the perfect amount of heat regulation for your room.







HEETA 

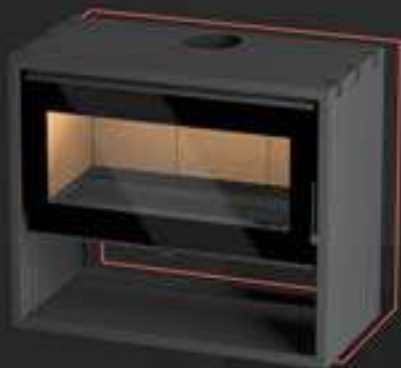


## 600 Heeta Insert Designer

- Dimensions: Width 605mm x Height 535 mm x Depth 480 mm
- Flue Size Outlet: 150 diameter
- Heating Capacity: 285m<sup>3</sup>
- Weight: 103.5 kg
- Output Nominal 9kw - Max 12kw
- Efficiency: 80%
- 5mm Steel Firebox with Soil Brick lining.
- 5 Year Limited Guarantee

Discover contemporary-chic like never before. This compact Box shaped beauty is quite unique in the sense that it varies from the abundant rectangular models on the market.

Heats small to medium sized rooms comfortably



## 950 Heeta LB

- Dimensions: Width 950mm x Height 785 mm x Depth 480 mm
- Flue Size Outlet: 200mm
- Heating Capacity: 450m<sup>3</sup>
- Weight: 186.5 kg
- Output Nominal 13kw - Max 16kw
- Efficiency: 80%
- 5mm Steel Firebox with Soil Brick lining.
- 5 Year Limited Guarantee

The Big Brother of the 600 LB and made to heat large areas easily. You wouldn't expect anything less from this 16Kw Beast of a stove. An open wall of at least 1100mm is needed for this unit to stand proud and make its mark.

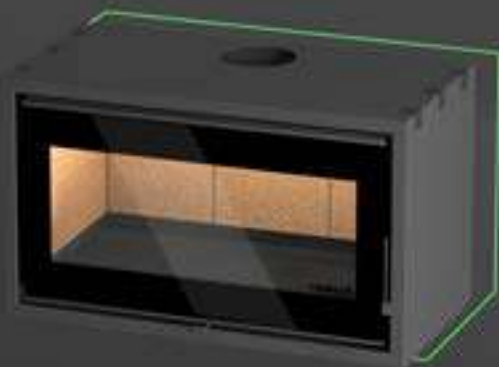
Like every model of the Heeta Range, The 950LB has brilliant airflow management, ensuring the perfect amount of heat regulation for your room.





HEETA 

## 950 Heeta Freestanding



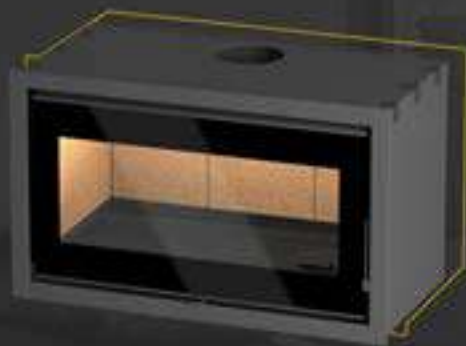
- Dimensions: Width 950mm x Height 535 mm x Depth 480 mm
- Flue Size Outlet: 200mm
- Heating Capacity: 450m<sup>3</sup>
- Weight: 179.5 kg
- Output Nominal 13kw - Max 16kw
- Efficiency: 80%
- 5mm Steel Firebox with Soil Brick lining.
- 5 Year Limited Guarantee

This is the 950LB without the logbase and appeals more to interior designers as it allows their creative juices to flow and create a feature around the stove with its clean lines and large glass door.

With its large log loading area, this unit comes in at 16 Kilowatt and once again has by far the best Kilowatt to Rand Value-for-money on the market.



## 950 Heeta Insert



- Dimensions: Width 950mm x Height 535 mm x Depth 480 mm
- Flue Size Outlet: 200mm
- Heating Capacity: 450m<sup>3</sup>
- Weight: 179.5 kg
- Output Nominal 13kw - Max 16kw
- Efficiency: 80%
- 5mm Steel Firebox with Soil Brick lining.
- 5 Year Limited Guarantee

A highly efficient woodburning cassette fire, with great aesthetic flames and edge finishing.

Made from 5mm steel and fitted with a soil brick lining, this stove is virtually bulletproof. With its large log loading area, this unit comes in at 16 Kilowatt and has by far the best Kilowatt to Rand Value-for-money on the market.



## Business & Quality Policy

The business success of Heeta is based on the production of top quality products modern design, fast delivery and constant co-operation with customers and suppliers.

The satisfaction of our customers is our main goal and we are working every day to establish quality and long-term relationships with our customers, whose trust we gain with the consistent quality of the delivered goods.

All employees are familiar with the strategic goals of Heeta and work together to achieve corporate goals and meet the quality management system requirements.

Heeta's long-standing business and success on the World market is accomplished thanks to dedicated employees, but also through continuous investment in new technologies and education of its employees. In the future, we are planning new investments that will further enhance our production and ensure market competitiveness.



*Elegant & modern design.*



*High efficiency & pleasant atmosphere.*



*Easy to use & safe handling.*



*Technically proven quality product.*